



ASSEMBLY TOOLS AND SYSTEMS



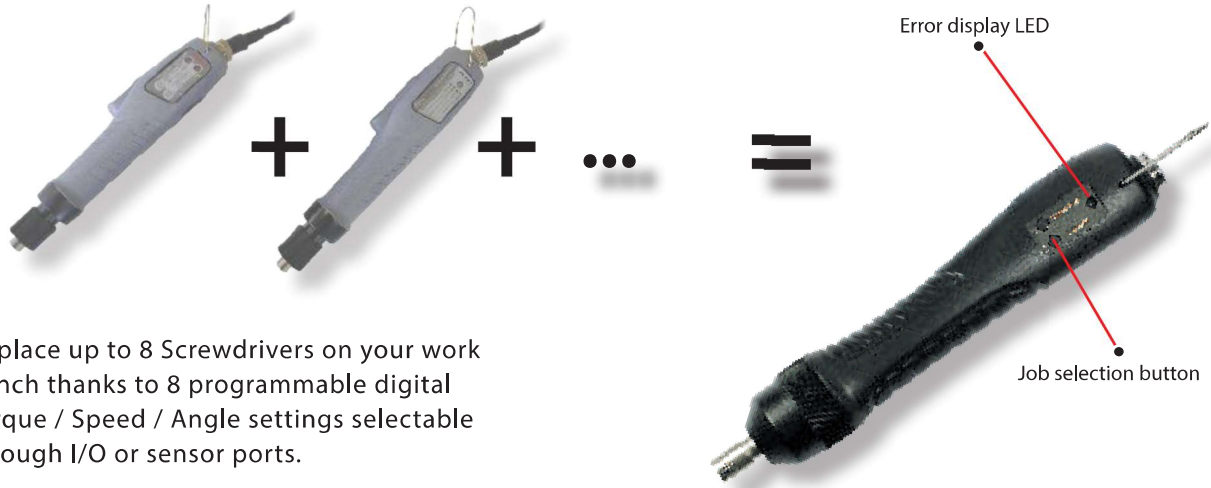
HD Screwdrivers



DC Controlled screwdrivers

HD Series

A new way to optimize your tightening process



- Replace up to 8 Screwdrivers on your work bench thanks to 8 programmable digital Torque / Speed / Angle settings selectable through I/O or sensor ports.
- Set up to 8 counting programs with up to 20 screws each with different torque targets.

Best choice for Cell line Manufacturing



Easy PC Communication through USB Port

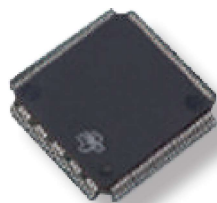


Screw counter inside (detect cross thread, screw omission...)



Tightening process management through 25P I/O port or sensor port

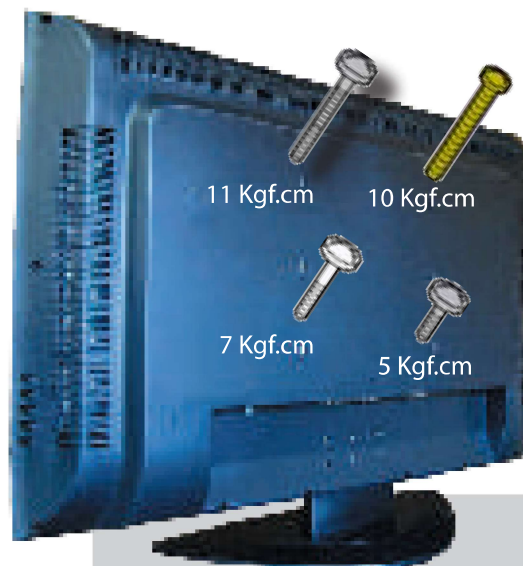
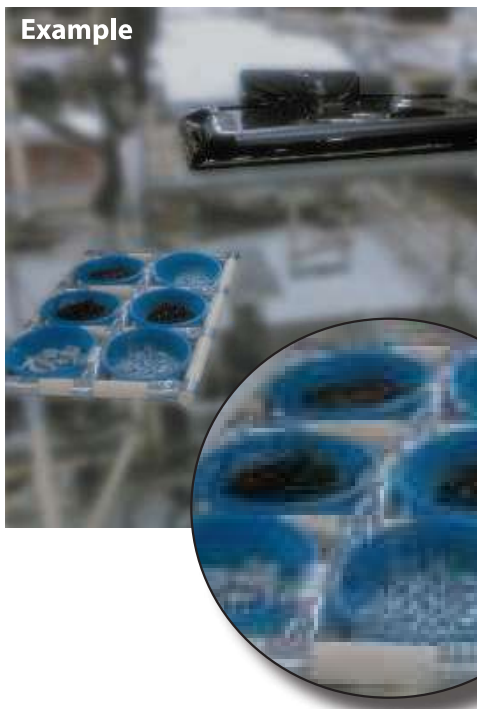
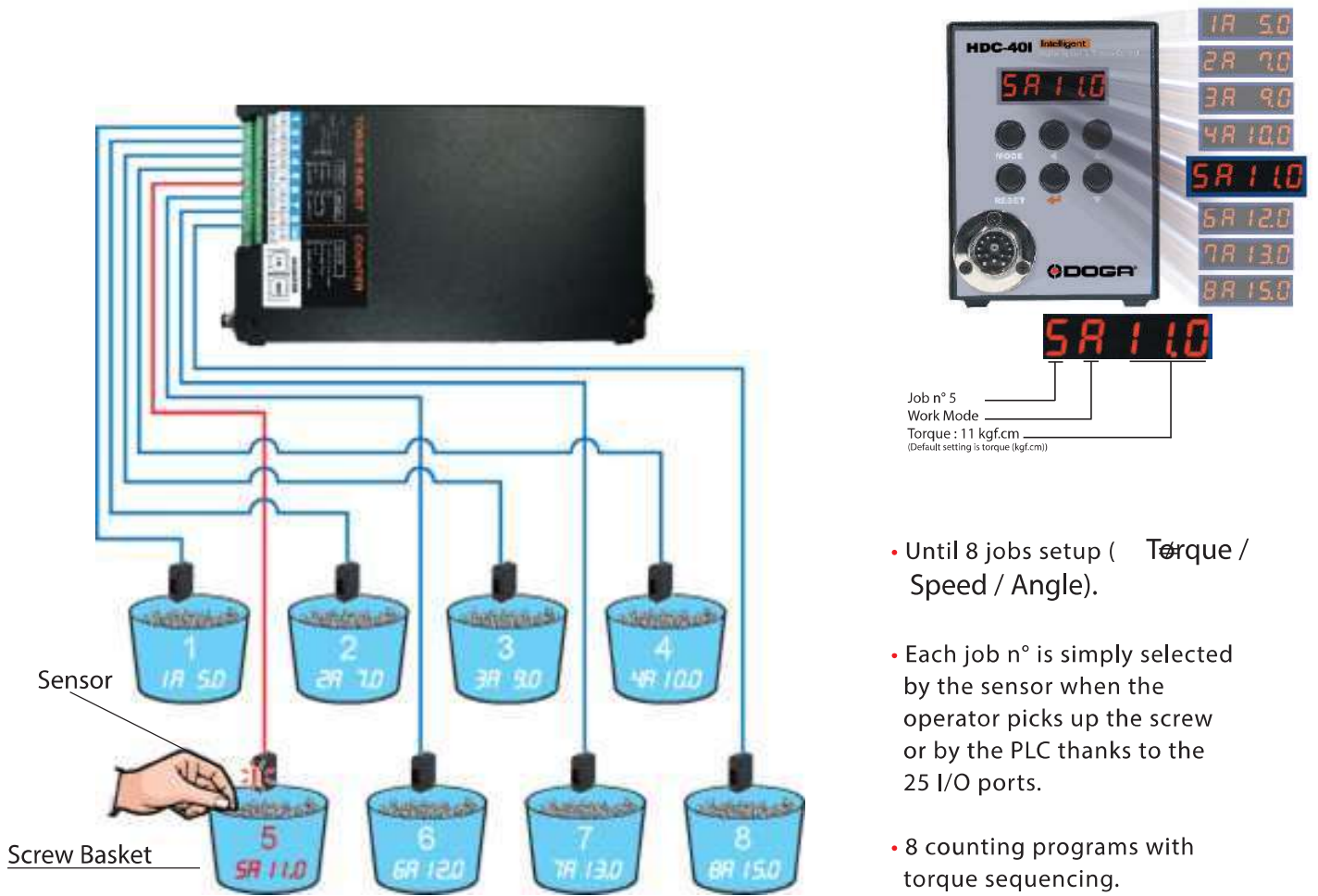
Built-in 32 Bit microprocessor



Data monitoring & Quality Control



Example of job selection through sensors



8 different jobs with one Hybrid screw driver.

Jobs may be selected as well through PLC, socket tray...



DC Controlled screwdrivers

HD Series



0,3 to 9,8 NM



- Brushless DC motor (service free).
- ESD free by body grounding.
- Torque repeatability ~ 7%.
- Inside memory chip for tool data and recognition.
- Built - in air clutch.
- Angle monitoring.
- Sequencing programs.
- Noise level < 70 dB.
- Vibration level < 2,5 m/s².

PHD100N-A/D

HD100N-A

HD220A

HD150PA

40 Volts hybrid screwdrivers

0,3 - 4,4 Nm

Model	Torque Range (Nm)	Speed rotation (rpm)	Drive	Starting system	Weight (Kg)	Code
HD081A	0,3 - 0,78	1000 to 1700	Hex 1/4"	Lever	0,44	4-1058880
HD150A-G	0,5 - 1,5	500 to 1700	Hex 1/4"	Lever	0,44	4-1027470
HD220A-G	0,7 - 2,2	400 to 1250	Hex 1/4"	Lever	0,44	4-1027471
HD450A-G	0,98 - 4,4	300 to 600	Hex 1/4"	Lever	0,51	4-1027472
HD150PA-G	0,5 - 1,5	500 to 1700	Hex 1/4"	Push to start	0,44	4-1027473
HD220PA-G	0,7 - 2,2	400 to 1250	Hex 1/4"	Push to start	0,44	4-1027475
HD450PA-G	0,98 - 4,4	300 to 600	Hex 1/4"	Push to start	0,51	4-1027474

Standard packing : screwdriver, 14P-3M cable, test bits.

40 Volts hybrid spindles

0,5 - 4,4 Nm

Model	Torque Range (Nm)	Speed rotation (rpm)	Drive	Starting system	Weight (Kg)	Code
HDA150A	0,5 - 1,5	500 to 1700	Hex 1/4"	Remote	0,44	4-1042224
HDA220A	0,7 - 2,2	400 to 1250	Hex 1/4"	Remote	0,44	4-1042225
HDA450A	0,98 - 4,4	300 to 600	Hex 1/4"	Remote	0,51	4-1042226

Standard packing : screwdriver, 14P-3M cable, test bits.

35 Volts hybrid screwdrivers

1,17 - 9,8 Nm

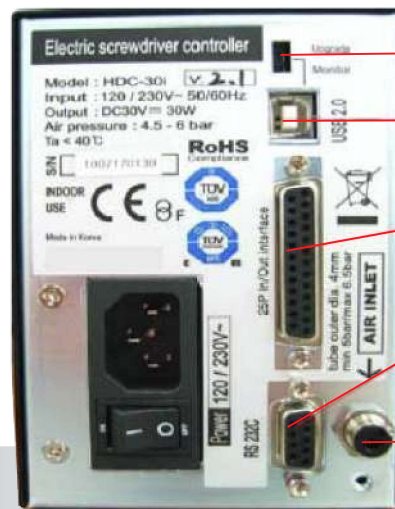
Model	Torque Range (Nm)	Speed rotation (rpm)	Drive	Starting system	Shape	Weight (Kg)	Code
HD35N-A	1,17 to 3,4	500 to 1500	Hex 1/4"	Lever	Straight	0,7	4-1077880
HD50N-A	1,47 to 4,9	300 to 1050	Hex 1/4"	Lever	Straight	0,7	4-1077881
HD100N-A	3 to 9,8	250 to 500	Hex 1/4"	Lever	Straight	0,75	4-1077882
HD35NP-A	1,17 to 3,4	500 to 1500	Hex 1/4"	Push to start	Straight	0,7	4-1070035
HD50NP-A	1,47 to 4,9	300 to 1050	Hex 1/4"	Push to start	Straight	0,7	4-1070036
PHD35N-A/U*	1,17 to 3,4	500 to 1500	Hex 1/4"	Trigger	Pistol	0,82	4-1070032
PHD50N-A/U*	1,47 to 4,9	400 to 1100	Hex 1/4"	Trigger	Pistol	0,82	4-1070033
PHD100N-A/U*	3 to 9,8	250 to 500	Hex 1/4"	Trigger	Pistol	0,86	4-1070034
PHD35N-A/D**	1,17 to 3,4	500 to 1500	Hex 1/4"	Trigger	Pistol	0,82	4-1070040
PHD50N-A/D**	1,47 to 4,9	400 to 1100	Hex 1/4"	Trigger	Pistol	0,82	4-1070041
PHD100N-A/D**	3 to 9,8	250 to 500	Hex 1/4"	Trigger	Pistol	0,86	4-1070042

Standard packing : screwdriver, 14P-3M cable, test bits.

* : Top exit cable

** : handle exit cable

Controllers



- Com port usage selector
- USB Port for PC communication or firmware upgrade
- 25P I/O interface
- RS-232C Port
- Air pressure inlet (out dia 4 mm)

HDC-40i/HDC-35i

- Delivered with USB Com cable, air filter, air hose.

No	ITEM	SPECIFICATION	
1	Model	HDC-40i - 4-1042211 for HD40 V	HDC-35i - 4-1077883 for HD35 V
2	Input	Electric	AC120VC ou AC220V, 50~60 Hz/0,5 A
3		Air pressure	Min 5 bar/Max 6,5 bar
4	Output	Electric	DC40V, 3A
5	Fuse		AC250V, 10A
6	Dimension/Weight		104(w) 226,4(d) 144(h)mm / 2,6 Kg
7	Job parameters	Torque, Speed, Angle, Soft start, Torque tuning in 8 preset numbers	
8	Job selection	1) Front panel button 2) 25P I/O interface 3) F1 button on the driver	
9	Torque Calibration	From - 20% to +20%	
10	Auto detection of the connected Driver	Auto detection of the offset value from the EEP-rom inside the driver	
11	Error display	Error display by code no. in system, communication & pattern error group	
12	Fastening quality control	OK/NG monitoring of screw fastening by preset pattern of angles, times	
13	Screw Counter	Save the total screw number, and monitor the number of OK fastenings.	
14	Monitoring and parameter	Monitoring and parameter settings on PC program (MS Windows base)	
15	Communication port	USB or RS232C (option)	
16	Built in counter program	8 counting programs, 20 screws per program. Auto-sequencing of fastening strategies.	

Accessoires



Driver Cable 3M

Delivered with the tool
Code : 4-1042205
Option driver table 5m:
Code : 4-1042250

Standard :



USB Com Cable

Delivered with the controller
Code : 4-1042213

Options :



Pistol Grip for HD-G 40V
Code : 4-1042210
I/O sub-D25 mable cable
Code : 4-5200770



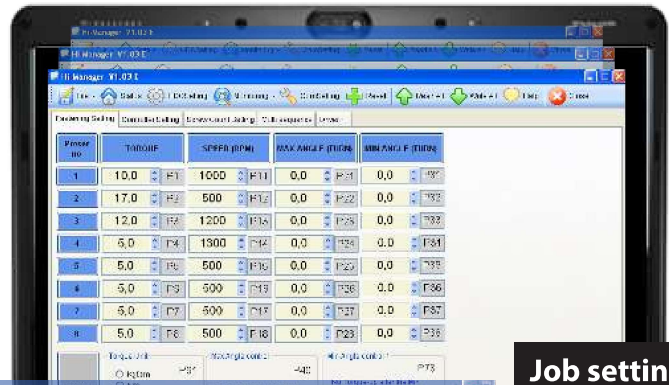
Angle head kit for 1/4" square HD-G 40V
Code : 4-1000251
Angle head kit for 1/4" HD220/450
Code : 4-1000111
Angle head kit for 1/4" Hex HD35/50/100
Code : 4-1000110



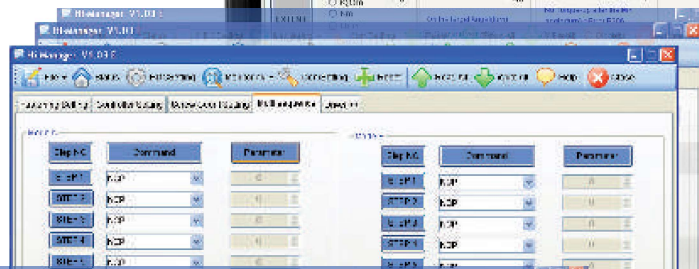
Software

Hi-Manager (HD Series)

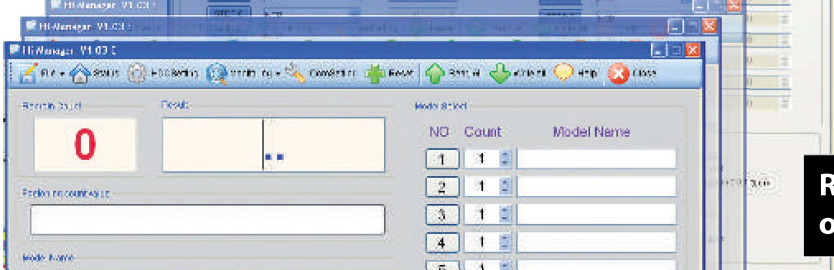
Set and monitor your tool,
your tightening environment on
free PC Software,



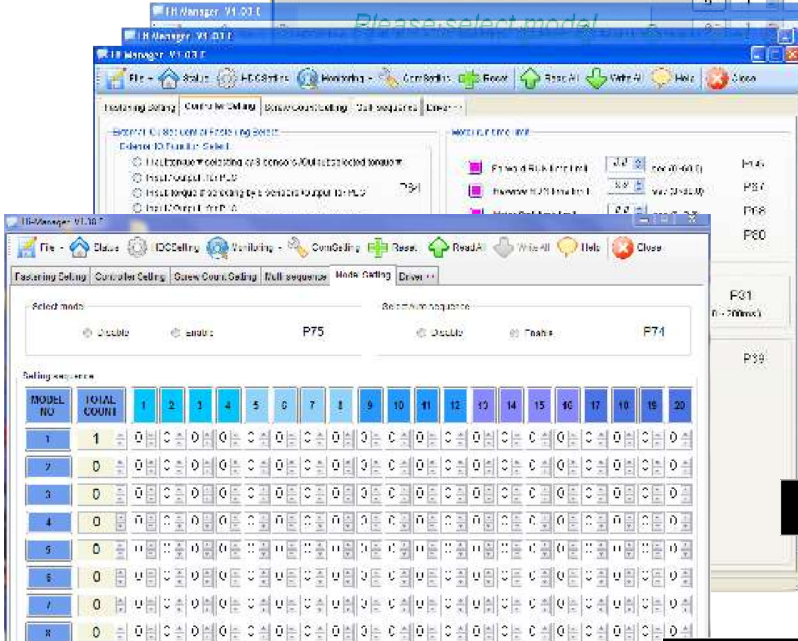
**Job settings
(Torque,
Speed, Angle,
Soft start,
Torque tuning)**



**Real time readings
of all tightenings**



**Screw counter
process Monitoring**



Error Monitoring

**Built-in counting program
with torque sequencing**



im Vertrieb von:

DOGATEC
Mit Sicherheit montiert

Tel.: +49/7361/8049950
D-73430 Aalen
www.dogatec.de